

# CSP-X1040D

## SERVICE MANUAL

Ver 1.0 2004. 02

US Model  
Canadian Model

CSP-X1040D is respectively CDC-X104 provided with the speaker unit.

This service manual only covers the speaker unit. Refer to the appropriate service manual CDC-R104/X104/X144 for the main section.

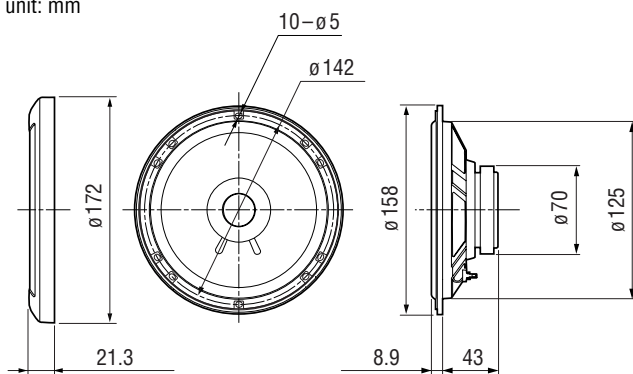
### SPECIFICATIONS

|                     |   |
|---------------------|---|
| Speaker             | Dual cone type<br>Woofer 16 cm, polypropylene cone type |
| Maximum input power | 130 W   |
| Rated input power   | 30 W  |
| Impedance           | 4 ohms  |
| Sensitivity         | 89 dB/W/m   |
| Frequency response  | 40 – 22,000 Hz  |
| Mass                | Approx. 460 g per speaker                               |

Design and specifications are subject to change without notice.

### DIMENSIONS

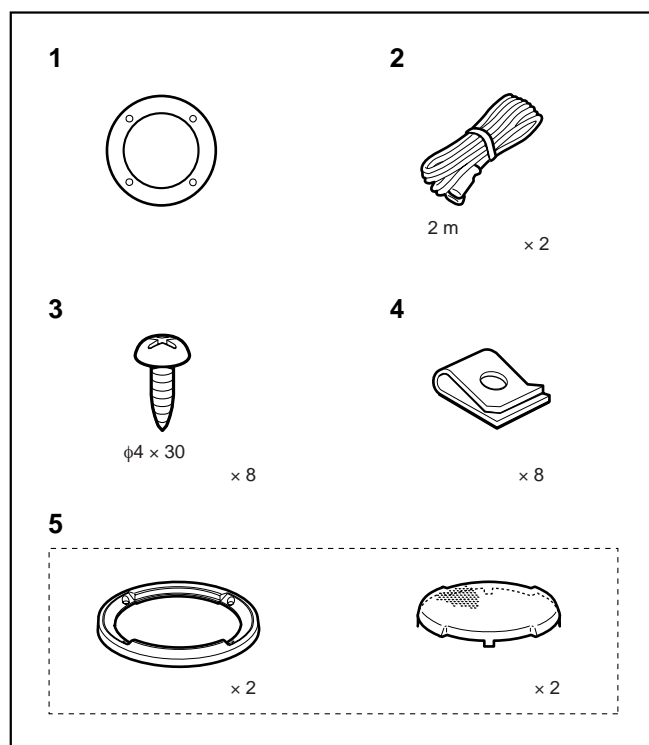
unit: mm



Mounting depth (recommend): 48

### • PARTS LIST

| Ref. No. | Part No.     | Description                                   | Remark |
|----------|--------------|---|--------|
|          | 1-544-814-32 | SPEAKER (16cm)                                |        |
|          | 3-256-934-11 | MANUAL, INSTRUCTION (ENGLISH,FRENCH, SPANISH) |        |
| 1        | 3-256-189-01 | TEMPLATE (A)                                  |        |
| 2        | 1-574-318-71 | CORD (WITH TERMINAL) (L-CH) (WHITE)           |        |
| 2        | 1-574-318-81 | CORD (WITH TERMINAL) (R-CH) (GLAY)            |        |
| 3        | 3-240-189-11 | SCREW, SPECIAL                                |        |
| 4        | 3-590-903-11 | NUT, SPEED                                    |        |
| 5        | X-3383-836-1 | NET ASSY, GRILLE                              |        |



FM/AM COMPACT DISC PLAYER/  
DUAL CONE SPEAKER

9-877-586-01  
2004B04-1  
© 2004. 02

Sony Corporation  
e Vehicle Company  
Published by Sony Engineering Corporation

